
Economics Working Paper 44
**Monopolistic Competition, Endogenous
Markups, and Growth**

Jordi Galí*
Columbia University

August 1993



UNIVERSITAT POMPEU FABRA

*Balmes, 132
Telephone (343) 484 97 00
Fax (343) 484 97 02
08008 Barcelona
e-mail econwp@upf.es*



Economics Working Paper 44

**Monopolistic Competition, Endogenous
Markups, and Growth**

Jordi Galí*
Columbia University

August 1993

Keywords: Monopolistic Competition, Endogenous Markups and Growth.

Journal of Economic Literature classification: L13, O41.

* Graduate School of Business, 607 Uris Hall, Columbia University, New York, NY 10027. Tel.: (212) 854-2641. Prepared for the Eighth Annual Congress of the European Economic Association (Helsinki, August 1993).

UNIVERSITAT POMPEU FABRA
BIBLIOTECA



1001960995

Abstract

Markup variations brought about by changing demand conditions can have a significant impact on the growth dynamics of imperfectly competitive economies: they can generate multiple steady states, as well as multiple equilibrium paths for given initial conditions. We illustrate that result in the context of two alternative models. In the first model equilibrium markups depend on the aggregate savings rate. In the second model the markup level varies with the range of intermediate goods available. We discuss some of the empirical implications of the class of models introduced in the paper.

1. Introduction

The present paper describes some recent research on the implications of market power and markup variations for the dynamics of growth. The central result of that research can be summarized as follows: economies in which the nature of competition implies some systematic variation of markups along a growth path may exhibit equilibrium dynamics substantially different from those found in the neoclassical model of Cass (1965) and Koopmans (1985). In particular, they may exhibit multiple steady states, as well as multiple equilibrium paths for given initial conditions. This is true even in economies in which the presence of market power is the only departure from standard neoclassical assumptions.

In order to understand the role of markups in dynamic models of capital accumulation it is useful to look at the following first-order condition of a monopolistic competitor's problem:

$$(P_j/P) (1 - 1/\xi_j) f'(k_j) = r + \delta \quad (1)$$

where j indexes variables that are specific to our firm, P_j is the price per unit of output (set by the firm), P is an aggregate price index, k_j is the capital stock, $f'(k_j)$ is the marginal product of capital (*MPK*), ξ_j is the price-elasticity of demand, δ is the depreciation rate, and r is the interest rate. The left hand side of (1) corresponds to the firm's marginal revenue product of capital (*MRPK*), i.e., the product of the marginal revenue $(P_j/P) (1 - 1/\xi_j)$ and the marginal product of capital f' . The right hand side corresponds to the rental price of capital. The firm's optimal markup is given by $\mu_j \equiv (1 - 1/\xi_j)^{-1}$. Here is the key point: the presence of market power introduces a wedge between the firm's *MPK* and its *MRPK*. That wedge results from the firm's recognition that a price reduction would be needed if its customers had to absorb the additional output resulting from a (marginal) increase in the capital stock. The lower is the price elasticity (i.e., the higher the markup), the larger the price

reduction required and, given the *MPK*, the lower the return to investment. Thus, the dynamics of capital accumulation are affected by demand conditions.

Consider now a symmetric, stationary equilibrium of a Chamberlinian economy with many such firms. Symmetry implies $P_j = P$, $k_j = k$, $\xi_j = \xi$, and $\mu_j = \mu$, for all j . Under the simplifying assumption of no underlying growth, stationarity requires that r coincides with the consumer's discount rate ρ . Thus, a steady state capital stock k^* is implicitly given by any solution to

$$R(k^*) \equiv \frac{f'(k^*)}{\mu} - \delta = \rho \quad (2)$$

Under the neoclassical assumption of a diminishing *MPK* and the usual Inada conditions, a constant markup μ implies the existence of a unique steady state k^* . Furthermore, one can easily show that, in that case, the presence of market power will be equivalent in its general equilibrium effects to the introduction of a constant tax rate ($1/\xi$) on capital income (with full rebate): the resulting equilibrium dynamics are suboptimal, but qualitatively identical to those found in the model without distortions.

In contrast, if the nature of competition is such that, in equilibrium, the elasticity ξ increases with the aggregate capital stock, the *MRPK* could be increasing for some range of capital values: the positive effect on marginal revenue implied by the higher demand elasticity associated with higher capital could more than offset the negative effect resulting from the diminishing *MPK*, and thus lead to a return function R consistent with multiple steady states, as illustrated in Figure 1. Notice that such a result does not hinge at all on the presence of increasing returns, multiple sectors, overlapping finite-lived agents or any other departure from the Cass-Koopmans framework that other researchers have shown to be a possible source of multiple steady states.

As illustrated below, the existence of multiple steady states is often associated with the presence, for given initial conditions, of multiple equilibrium paths

approaching different steady states. Clearly, such a characterization of the economy's equilibrium outcome is in sharp contrast with the predictions of the original Cass-Koopmans framework.

In the next two sections I sketch two models which generate, in equilibrium, the negative relationship between markups and the capital stock which underlies the multiple equilibrium results discussed above, and describe some of the resulting dynamics.

2. A Model in which Markups depend on the Savings Rate

The model described in this section is a version of the one developed in Galí (1993a). Assume a market structure characterized by a fixed number (say, M) of monopolistically competitive firms. Each firm produces a differentiated product with a constant returns technology that uses labor and capital. It sell its product to two types of customers: consumers, who derive utility from its consumption, and other firms, which use it to increase their capital stock. We assume that firms cannot price-discriminate across those two markets. Let $\sigma > 1$ and $\eta > 1$ be the (constant) elasticities of substitution across goods in consumption and production activities, respectively. The effective demand elasticity faced by a typical firm (say, firm j) at any point in time is given by

$$\xi(\lambda_j) = \lambda_j \eta + (1-\lambda_j) \sigma \quad (3)$$

where λ_j is the share of firms' purchases in total demand for good j . In a symmetric equilibrium $\lambda_j = \lambda$, $j = 1, 2, \dots, M$, where λ corresponds to the aggregate savings rate. Accordingly, the equilibrium markup μ will be a function of that savings rate.

As in the neoclassical model¹, the economy's equilibrium can be defined as a trajectory of a system of differential equations in capital (k) and consumption (c) satisfying the appropriate initial and transversality conditions. The dynamical system

¹ See, e.g., Barro and Sala-i-Martin (1992), chapter 1.

for the model sketched above is

$$(\dot{c} / c) \geq \theta \left[r(k, c) - \rho \right] \quad (4)$$

$$\dot{k} = f(k) - \delta k - c \quad (5)$$

where

$$r(k, c) \equiv \frac{f'(k)}{\mu(1 - c/f(k))} - \delta$$

is the equilibrium interest rate and θ is the consumer's (constant) elasticity of intertemporal substitution. Let

$$R(k) \equiv r(k, f(k) - \delta k) = \frac{f'(k)}{\mu(\delta k/f(k))} - \delta$$

determine the interest rate as a function of k , conditional on $\dot{k} = 0$. A steady state capital stock k^* associated with (4)-(5) is given by any solution to $R(k^*) = \rho$, as in (2).

Under the neoclassical assumptions of diminishing average and marginal products of capital, the possibility of multiple steady states (i.e., multiple solutions to $R(k^*) = \rho$) arises whenever η is sufficiently greater than σ , i.e. whenever markups are (sufficiently) inversely related to the savings rate, for in that case R may be nonmonotonic.

Suppose that three such steady states exist (as in Figure 1). One can show that the "low" and "high" steady states (hereafter, L and H) are always *saddles*, whereas the "middle" steady state (M) is, generically, either a *sink* (for high values of θ) or a *source* (for low values of θ).

Figures 2 and 3 illustrate the kind of global equilibrium dynamics that arise in the presence of multiple steady states. Both figures correspond to a calibrated version of the model discussed above. The three steady states correspond to the three intersections of the $\dot{k} = 0$ and $\dot{c} = 0$ loci.

In Figure 2 the elasticity of intertemporal substitution θ has been set at a relatively high level. In the case displayed M is a stable focus. For any given initial

capital stock $k(0)$ there are three types of trajectories consistent with a perfect foresight equilibrium. In one of them the initial level of consumption is the one that puts the economy exactly on L's stable manifold (W_L^s), and convergence to L occurs. In a second possible equilibrium trajectory, the initial consumption level falls on W_H^s , the stable manifold converging to H. In addition to the previous trajectories, there exists a *continuum* of trajectories (represented as a shaded area in Figure 2) which are also consistent with equilibrium. Each of those trajectories converges to the (stable) steady state M.

Figure 3 portrays the equilibrium dynamics for a lower θ value. M is an unstable focus in this case, and two of the trajectories departing from it coincide with two branches of the stable manifolds of L and H. For $k(0) \in (k_1, k_2)$ there exist multiple equilibrium paths. Some of those paths lead to L, some lead to H. That multiplicity disappears when $k(0)$ is outside the overlap region (k_1, k_2) . In the latter case the initial conditions fully determine the equilibrium path and whether the economy converges to L or H.

The type of global dynamics shown in Figures 2 and 3 correspond to a range of relatively high and low values of θ . In Galí (1993a) I show that for an (admittedly small) range of intermediate values the equilibrium dynamics may also involve one or more limit cycles (some of which are stable) about M.

3. A Model in which Markups depend on Product Diversity

In Galí (1993b) I explore an alternative economic structure capable of generating multiple equilibria as a result of markup variations. There is a continuum of monopolistically competitive firms producing a range of intermediate goods represented by the open interval $(0, M)$. They sell their goods to a competitive firm, which uses them as inputs to produce (under constant returns) a single final good. The latter is

purchased by households, who consume part of it and use the remainder to increase their capital holdings, which they rent to the intermediate firms.

The final goods technology is such that the elasticity of substitution across inputs increases with the range of inputs used (which, in equilibrium, coincides with the available range). As a result, the optimal markup charged by the intermediate firms decreases with the extent of competition, i.e., $\mu = \mu(M)$, with $\mu' < 0$. In the presence of a fixed cost (in the form of overhead capital), free entry and zero profits imply that the range of intermediate firms operating at any given point in time (and, thus, the range of inputs available) is a continuous, increasing function of the aggregate capital stock. Formally, $M = m(k)$, with $m' > 0$. The equations of motion describing an equilibrium correspond, again, to (4) and (5) with the interest rate now being given by

$$r(k, c) \equiv R(k) \equiv \frac{f'(k)}{\mu(m(k))} - \delta$$

Again, any solution to $R(k^*) = \rho$ qualifies as a steady state capital stock k^* of the model. As above, the existence of multiple steady states requires that R is increasing for some range of k values. That condition, in turn, requires that (a) f' does not diminish too rapidly, (b) markups are strongly negatively related to the range of operating firms/available inputs, and (c) the latter is strongly positively related to the aggregate capital stock. Again, whenever three steady states exist (as in Figure 1), the low and high steady states can be shown to be *saddles* whereas the the middle steady state can be either a source or a sink, depending on parameter values.

Figure 4 shows the kind of equilibrium dynamics that arise for a calibrated version of the model consistent with three steady states. In the case portrayed M is an unstable focus. As in Figure 3, if $k(0)$ is sufficiently high (low) the equilibrium is unique and converges monotonically to H (L). If, on the other hand, $k(0)$ is close to k_m^* , multiple perfect foresight equilibrium paths coexist. Whether the economy eventually approaches L or H depends on the trajectory that is "selected", in a way consistent with agents'

initial expectations on the future path of the economy.

4. Some Empirical Implications.

The class of variable markup models discussed above has some interesting empirical implications. First, the model yields a simple prediction on the relationship between the size of markups and income levels across economies. Suppose that all economies are characterized by identical preferences, technology and market structure. If the conditions underlying the existence of multiple equilibria hold, one would observe (at least in the long run) a negative correlation between the level of income (and capital) and the size of markups. Does that relationship hold in the data ? In order to address that question we need some measure of the size of markups in different countries. In the presence of market power in goods markets, profit maximization by firms implies the following relationship between the markup (μ), the labor income share (s_L), and the elasticity of output with respect to labor input (α) (see, e.g., Hall (1988))

$$\mu = \frac{\alpha}{s_L}$$

Under the maintained assumption of similar α values across countries (as implied by a Cobb-Douglas technology), we can use the reciprocal of the labor income share as a proxy for the average size of markups in each country. I constructed those measures using labor income share data for 46 countries taken from the U.N. National Income Accounts publication, and corresponding to 1985. Then I tested for a significant correlation between that measure and the Summers-Heston's per capita income measure (in logs, denoted by y) for the same year and countries. The estimated cross-country OLS regression is (with standard errors in brackets)

$$y = \underset{(0.27)}{3.20} - \underset{(0.134)}{1.027} \mu + \varepsilon \quad (R^2 = 0.50)$$

which points to a significantly negative correlation between markups and per capita

income, a result consistent with the class of models discussed above. Similar results (not reported) obtain when one controls for other variables (such as primary and secondary enrollment rates). The previous result reflects the fact that "rich" countries tend to have a higher labor income share than "poor" countries. Our models provide an explanation for that observation, one based on the presence of differences in markups².

Some other implications should be evident from the discussion above. Given parameter values consistent with multiple steady states, the income and consumption levels of economies with identical preferences and technology may fail to converge asymptotically, even if their initial conditions (given by their initial capital stocks) are identical. That possible outcome seems consistent with what Lucas (1993) has termed "economic miracles", i.e., episodes characterized by unpredictably fast growth that leads to a growing income gap between economies that were similar at some point in time. The interest rate is, on the other hand, asymptotically equalized across economies even in the absence of capital mobility. Such equalization of interest rates coexists with different stationary levels of capital and, thus, different asymptotic savings and investment rates. Overall, those results seem consistent with two empirical observations that are at odds with the Cass-Koopmans model (given identical preferences and technology for different countries): the lack of convergence in per capita income (e.g., Barro (1991)), as well as the absence of large cross-country differences in interest rates and the consequent failure of capital to flow from rich to poor countries (e.g., Lucas 1990)).

² Of course, other explanations exist. Due to the nature of the technology, α could be positively related to the capital labor ratio (and income), for instance.

References

- Barro, Robert J., 1991, Economic Growth in a Cross Section of Countries, *Quarterly Journal of Economics* 106, 407-443.
- Barro, Robert J., and Xavier Sala-i-Martin, 1992, *Economic Growth*, forthcoming.
- Cass, David, 1965, Optimum Growth in an Aggregative Model of Capital Accumulation, *Review of Economic Studies* 32, 233-240.
- Galí, Jordi, 1993, Multiple Equilibria in a Growth Model with Monopolistic Competition, mimeo, Columbia University.
- Galí, Jordi, 1993, Product Diversity, Endogenous Markups, and Development Traps, mimeo, Columbia University.
- Hall, Robert E., 1988, The Relation between Price and Marginal Cost in the U.S. Industry, *Journal of Political Economy* 96, 921-947.
- Koopmans, Tjalling C., 1965, On the Concept of Optimal Growth, in *The Econometric Approach to Development Planning* (Rand McNally, Chicago).
- Lucas, Robert E., 1990, Why Doesn't Capital Flow from Rich to Poor Countries ?, *American Economic Review* 80, 92-96.
- Lucas, Robert E., 1993, Making a Miracle, *Econometrica* 61, 251-272.

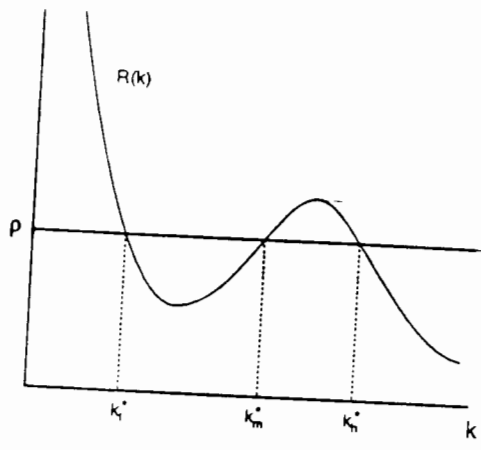


Figure 1

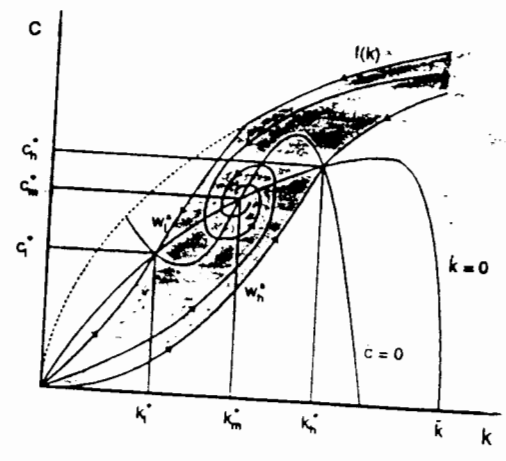


Figure 2

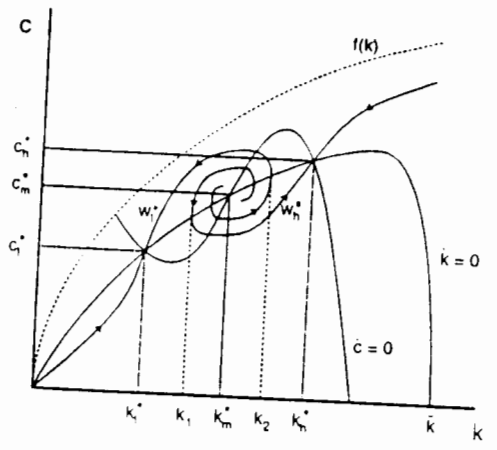


Figure 3

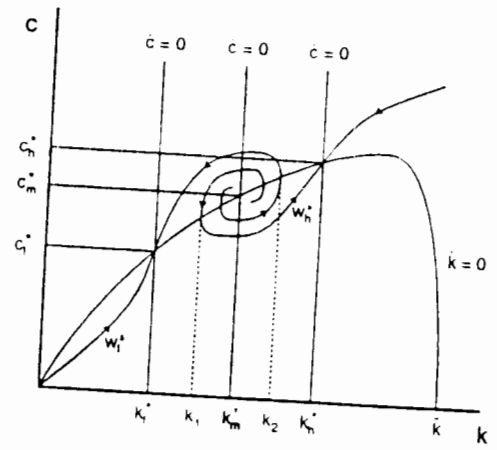


Figure 4

RECENT WORKING PAPERS

1. Albert Marcet and Ramon Marimon
Communication, Commitment and Growth. (June 1991)
[Published in *Journal of Economic Theory* Vol. 58, no. 2, (December 1992)]
2. Antoni Bosch
Economies of Scale, Location, Age and Sex Discrimination in Household Demand. (June 1991)
[Published in *European Economic Review* 35, (1991) 1589-1595]
3. Albert Satorra
Asymptotic Robust Inferences in the Analysis of Mean and Covariance Structures. (June 1991)
[Published in *Sociological Methodology* (1992), pp. 249-278, P.V. Marsden Edt. Basil Blackwell: Oxford & Cambridge, MA]
4. Javier Andrés and Jaume Garcia
Wage Determination in the Spanish Industry. (June 1991)
5. Albert Marcet
Solving Non-Linear Stochastic Models by Parameterizing Expectations: An Application to Asset Pricing with Production. (July 1991)
6. Albert Marcet
Simulation Analysis of Dynamic Stochastic Models: Applications to Theory and Estimation. (November 1991), 2d. version (March 1993)
[Forthcoming in *Advances in Econometrics* invited symposia of the Sixth World Congress of the Econometric Society (Eds. JJ. Laffont i C.A. Sims). Cambridge University Press]
7. Xavier Calsamiglia and Alan Kirman
A Unique Informationally Efficient and Decentralized Mechanism with Fair Outcomes. (November 1991)
[Forthcoming in *Econometrica*]
8. Albert Satorra
The Variance Matrix of Sample Second-order Moments in Multivariate Linear Relations. (January 1992)
[Published in *Statistics & Probability Letters* Vol. 15, no. 1, (1992), pp. 63-69]
9. Teresa Garcia-Milà and Therese J. McGuire
Industrial Mix as a Factor in the Growth and Variability of States' Economies. (January 1992)
[Forthcoming in *Regional Science and Urban Economics*]
10. Walter Garcia-Fontes and Hugo Hopenhayn
Entry Restrictions and the Determination of Quality. (February 1992)
11. Guillem López and Adam Robert Wagstaff
Indicadores de Eficiencia en el Sector Hospitalario. (March 1992)
[Published in *Moneda y Crédito* Vol. 196]

12. Daniel Serra and Charles ReVelle
The PQ-Median Problem: Location and Districting of Hierarchical Facilities. Part I (April 1992)
[Published in *Location Science*, Vol. 1, no. 1 (1993)]
13. Daniel Serra and Charles ReVelle
The PQ-Median Problem: Location and Districting of Hierarchical Facilities. Part II: Heuristic Solution Methods. (April 1992)
[Forthcoming in *Location Science*]
14. Juan Pablo Nicolini
Ruling out Speculative Hyperinflations: a Game Theoretic Approach. (April 1992)
15. Albert Marcet and Thomas J. Sargent
Speed of Convergence of Recursive Least Squares Learning with ARMA Perceptions. (May 1992)
[Forthcoming in *Learning and Rationality in Economics*]
16. Albert Satorra
Multi-Sample Analysis of Moment-Structures: Asymptotic Validity of Inferences Based on Second-Order Moments. (June 1992)
[Forthcoming in *Statistical Modelling and Latent Variables* Elsevier, North Holland. K.Haagen, D.J.Bartholomew and M. Deistler (eds.)]
- Special issue Vernon L. Smith
Experimental Methods in Economics. (June 1992)
17. Albert Marcet and David A. Marshall
Convergence of Approximate Model Solutions to Rational Expectation Equilibria Using the Method of Parameterized Expectations.
18. M. Antònia Monés, Rafael Salas and Eva Ventura
Consumption, Real after Tax Interest Rates and Income Innovations. A Panel Data Analysis. (December 1992)
19. Hugo A. Hopenhayn and Ingrid M. Werner
Information, Liquidity and Asset Trading in a Random Matching Game. (February 1993)
20. Daniel Serra
The Coherent Covering Location Problem. (February 1993)
21. Ramon Marimon, Stephen E. Spear and Shyam Sunder
Expectationally-driven Market Volatility: An Experimental Study. (March 1993)
[Forthcoming in *Journal of Economic Theory*]
22. Giorgia Giovannetti, Albert Marcet and Ramon Marimon
Growth, Capital Flows and Enforcement Constraints: The Case of Africa. (March 1993)
[Published in *European Economic Review* 37, pp. 418-425 (1993)]

9 788498 151688

23. Ramon Marimon
Adaptive Learning, Evolutionary Dynamics and Equilibrium Selection in Games. (March 1993)
[Published in *European Economic Review* 37 (1993)]
24. Ramon Marimon and Ellen McGrattan
On Adaptive Learning in Strategic Games. (March 1993)
[Forthcoming in *A. Kirman and M. Salmon eds. "Learning and Rationality in Economics"* Basil Blackwell]
25. Ramon Marimon and Shyam Sunder
Indeterminacy of Equilibria in a Hyperinflationary World: Experimental Evidence. (March 1993)
[Forthcoming in *Econometrica*]
26. Jaume Garcia and José M. Labeaga
A Cross-Section Model with Zeros: an Application to the Demand for Tobacco. (March 1993)
27. Xavier Freixas
Short Term Credit Versus Account Receivable Financing. (March 1993)
28. Massimo Motta and George Norman
Does Economic Integration cause Foreign Direct Investment?
(March 1993)
[Published in *Working Paper University of Edinburgh* 1993:I]
29. Jeffrey Prisbrey
An Experimental Analysis of Two-Person Reciprocity Games.
(February 1993)
[Published in *Social Science Working Paper* 787 (November 1992)]
30. Hugo A. Hopenhayn and Maria E. Muniagurria
Policy Variability and Economic Growth. (February 1993)
31. Eva Ventura Colera
A Note on Measurement Error and Euler Equations: an Alternative to Log-Linear Approximations. (March 1993)
32. Rafael Crespi i Cladera
Protecciones Anti-Opa y Concentración de la Propiedad: el Poder de Voto.
(March 1993)
33. Hugo A. Hopenhayn
The Shakeout. (April 1993)
34. Walter Garcia-Fontes
Price Competition in Segmented Industries. (April 1993)
35. Albert Satorra i Brucart
On the Asymptotic Optimality of Alternative Minimum-Distance Estimators in Linear Latent-Variable Models. (February 1993)

36. Teresa Garcia-Milà, Therese J. McGuire and Robert H. Porter
The Effect of Public Capital in State-Level Production Functions Reconsidered.
(February 1993)
37. Ramon Marimon and Shyam Sunder
Expectations and Learning Under Alternative Monetary Regimes: an Experimental
Approach. (May 1993)
38. José M. Labeaga and Angel López
Tax Simulations for Spain with a Flexible Demand System. (May 1993)
39. Daniel Serra and Charles ReVelle
Market Capture by Two Competitors: The Pre-Emptive Location Problem.
(May 1993)
40. Xavier Cuadras-Morató
Commodity Money in the Presence of Goods of Heterogenous Quality.
(July 1993)
[Forthcoming in *Economic Theory*]
41. M. Antònia Monés and Eva Ventura
Saving Decisions and Fiscal Incentives: A Spanish Panel Based Analysis.
(July 1993)
42. Wouter J. den Haan and Albert Marcet
Accuracy in Simulations (September 1993)
[Forthcoming in *Review of Economic Studies*]
43. Jordi Galí
Local Externalities, Convex Adjustment Costs and Sunspot Equilibria.
(September 1993)
[Forthcoming in *Journal of Economic Theory*]
44. Jordi Galí
Monopolistic Competition, Endogenous Markups, and Growth. (September 1993)